



**B&C**  
Technologies



ECONOMICAL DRYER

# DE FAMILY

30 - 50 - 75 - 120 - 170  
Pound Capacity



# The DE Family

Economy High Efficiency Dryers for General Laundry Applications and Small to Medium Sized On-Premise Laundries Including Hotel/Motel, Healthcare, Athletics, and Dry Cleaners.

The DE Family offers a wide selection of capacities, heating types, and control systems. It is the ideal dryer for standard on-premise installations as well as medium to large sized professional laundries. Our dryers boost productivity while simultaneously saving energy when compared to older equipment. The robust design and the ergonomically located controls provide long life and withstand abuse. Large doors on all models make loading and unloading simple.

## Built to Last – Rugged Construction and Insulated for Energy Efficiency

The DE Family features a standard stainless steel drying cylinder with double sealed bearings, cast iron pulleys, and a quiet belt drive. The heavy duty base frame protects the machine during shipping and installation. The powder coated totally enclosed cabinet provides excellent protection against corrosion. The welded cabinet design makes it stronger than any other dryer on the market today and includes insulation for retaining heat inside the dryer.

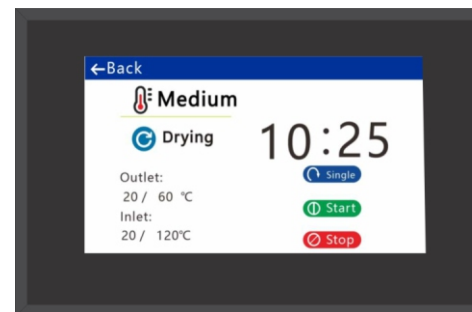


## The SimpliDri Control

The SimpliDri control is the standard control available on the DE Family. Featuring 5 drying programs with programmable time and temperature, the SimpliDri provides accurate control over the drying process. The control is simple to use, cost effective, and provides the operator with information about the drying process directly on the display.

## The SimpliTouch Control

The SimpliTouch control allows complete flexibility while being trouble free and easy to use. The 7 inch industrial touch screen is bright and easy to read while providing simple operation. The optional humidity sensing package stops the drying process when the goods have reached the desired moisture level, saving energy and time. Built-in diagnostics make servicing simple and the USB connection makes transferring programs easy.



## Large Door Opening

Loading and unloading laundry is much easier and faster with a door that opens 180 degrees. A door safety switch is standard, preventing operation when the door is open. A strong and simple magnetic latch keeps the door closed during the drying cycle.



## Totally Enclosed Motors

All drive and blower motors are totally enclosed to prevent contamination with lint. DE-30, DE-50, and DE-75 are available in single phase or three phase power, while the DE-120 and DE-170 are three phase only. Reversing is standard on the DE-120 and DE-170.

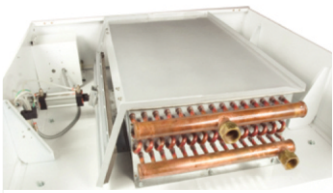


## Energy Saving Design



### Energy Saving Insulation

DE-120 and DE-170 feature energy saving insulation, helping to keep the heat inside the dryer rather than radiate it to the room as waste heat. Insulation is available as an option on the DE-30, DE-50, and DE-75.



### Steam Heating

DE-120 and DE-170 feature a compressed air damper system, which keeps the large steam coil charged at all times, reducing thermal cycling. Repeated heating and cooling a steam coil of this size reduces efficiency and increases energy consumption. DE-30, DE-50, and DE-75 use a standard steam valve.



### Gas Heating

Our engineered gas heat system yields an efficient atmospheric burn and reliable ignition, providing enough heat to quickly dry goods to maintain efficiency in the laundry room. Available in natural gas and liquid propane standard, other gasses can also be accommodated (consult factory).



### Electrical Heating

For areas where gas or steam might be impractical, B&C Technologies offers electrical heating from DE-30 through the DE-170. Our electric heating system is designed to provide gentle heat and sufficient power to quickly dry the goods to maintain laundry room efficiency. Electrically heated machines are three phase only.

# Specifications

MODEL	Units		DE-30		DE-50		DE-75		DE-120		DE-170	
	US	Metric										
Maximum Capacity	lbs	kg	30	14	50	23	75	34	120	55	170	77
<b>Overall Dimensions</b>												
A - Width	inch	mm	31.5	800	38.75	984	38.75	984	47.25	1200	56.25	1429
B - Depth	inch	mm	42	1067	42.75	1086	47.75	1213	63	1600	66.5	1689
C - Height (max)*	inch	mm	73	1854	76.5	1943	76.5	1943	88.75	2254	99.75	2534
<b>Drying Cylinder Information</b>												
Diameter	inch	mm	30	762	36.31	922	36.31	922	44.5	1130	51.5	1308
Depth	inch	mm	30	762	30	762	35.82	910	42.38	1076	42.5	1080
Volume	cu ft	liters	12.27	347	18	509	21.5	601	38.1	1080	51.24	1451
<b>Door</b>												
Door Opening Diameter	in	mm	21.37	543	25.65	652	25.62	651	32.37	822	35.5	902
Height to Bottom of Door	in	mm	32.25	819	30.25	768	30.25	768	27.25	692	32.5	826
<b>Gas Heating</b>												
Air Flow	CFM	cmm	500	14	750	21.25	900	25	2200	62	4000	113
Heat Input	BTU/hr	kcal/hr	90000	22500	130000	32500	200000	50000	375000	93750	550000	137500
Gas Inlet	Inch	mm	1/2	12.7	1/2	12.7	3/4	19	1	25	1	25
Exhaust Outlet	inch	mm	8	203	8	203	8	203	12	305	16	406
<b>Electrical Requirements</b>												
120VAC, 60Hz, 1PH	Amp	Breaker	10	20	13	20	14	20	n/a	n/a	n/a	n/a
208-230V, 50/60Hz, 1PH	Amp	Breaker	5	10	14	15	21	25	n/a	n/a	n/a	n/a
208-230V, 50/60Hz, 3PH	Amp	Breaker	2.2	10	6	10	9	10	23	30	32	40
380-460V, 50/60Hz, 3PH	Amp	Breaker	1.4	10	3.5	10	4.5	10	11	15	16	20
<b>Steam Heating</b>												
Air Flow	CFM	cmm	500	14	750	21.25	900	25	2200	62	4000	113
Steam Consumption	BHP	kW	2.6	25.5	4.6	45.12	6.5	63.76	19	186.38	27	264.86
Operating Pressure	psi	bar	80-125	5.5-8.6	80-125	5.5-8.6	80-125	5.5-8.6	80-125	5.5-8.6	80-125	5.5-8.6
Steam Supply	inch	mm	3/4	19	3/4	19	3/4	19	1-1/2	38	1-1/2	38
Exhaust Outlet	inch	mm	8	203	8	203	8	203	12	305	16	406
<b>Electrical Requirements</b>												
120VAC, 60Hz, 1PH	Amp	Breaker	10	20	13	20	14	20	n/a	n/a	n/a	n/a
208-230V, 50/60Hz, 1PH	Amp	Breaker	5	10	14	15	n/a	n/a	n/a	n/a	n/a	n/a
208-230V, 50/60Hz, 3PH	Amp	Breaker	2.2	10	6	10	9	10	23	30	32	40
380-460V, 50/60Hz, 3PH	Amp	Breaker	1.4	10	3.5	10	4.5	10	11	15	16	20
<b>Electric Heating</b>												
Air Flow	CFM	cmm	500	14	750	21.25	900	25	2200	62	4000	113
<b>Electrical Requirements</b>												
Exhaust Outlet	inch	mm	8	203	8	203	8	203	12	305	16	406
208-230V, 50/60Hz, 3PH	Amp	Breaker	60	70	66	70	98	100	215	225	n/a	n/a
380-460V, 50/60Hz, 3PH	Amp	Breaker	30	40	33	40	32	45	108	125	106	150
<b>Weight and Shipping Information</b>												
Net Weight	lb	kg	670	305	810	368	870	395	1650	750	2200	1000
Shipping Weight, Gas	lb	kg	720	327	850	386	910	414	1700	772	2300	1045
Shipping Weight, Steam	lb	kg	770	350	900	409	960	436	1800	818	2450	1114
Shipping Weight, Electric	lb	kg	720	327	850	386	910	414	1835	834	2450	1114
Shipping Volume	cu ft	cu m	54.74	1.55	70.41	1.99	78.32	2.22	138.42	3.92	194.24	5.5

\* - Refer to the General Specifications for detailed dimensions, [www.bandctech.com](http://www.bandctech.com)

Specifications subject to change without notice

## Standard Features:

- ◆ Stainless Steel Drying Cylinder
- ◆ SimpliDri Control
- ◆ 5 Drying Programs
- ◆ Heavy Duty Drive System
- ◆ Large Loading Door
- ◆ Designed to Save Money

## Optional Features:

- ◆ 7" Industrial Touch Screen Control
- ◆ Reversing Cylinder (Standard on DE-120 and DE-170)
- ◆ Rotation Sensor
- ◆ Humidity Sensing / Autodry
- ◆ Stainless Steel Front
- ◆ Fire Suppression System



B&C Technologies  
Panama City Beach, FL  
850-249-2222  
[www.bandctech.com](http://www.bandctech.com)  
[sales@bandctech.com](mailto:sales@bandctech.com)

**60/36 Warranty**



**60 Months:** Bearings, Bearing Housing, Frame, Shaft, Cylinder & Shell  
**36 Months:** All other non wear parts

